



LEWIS+  
MASON

LEWIS

# LEWIS



Discover a new way of living at Lewis+Mason — a place beating with the lively pulse of Anaheim. Experience life from a new perspective on your private balcony and look out onto a world of limitless horizons and possibilities. It's a fresh and undeniably modern new community of townhomes. And an exciting array of nearby world-class entertainment and endless shopping and dining make way for new experiences every day.



# FEATURES + AMENITIES

## IMPRESSIVE INTERIORS

- Full overlay, European frameless flat-panel cabinetry in white thermofoil with chrome T-bar handles
- Welcoming 12" x 12" Daltile® ceramic tile at entry in four color choices
- Quality Mohawk® carpet in six color choices in great room, dining room, bedrooms, halls, closets and stairs
- Mohawk® vinyl flooring in ten color choices in kitchen, bathrooms and laundry
- Contemporary recessed LED lighting in select locations
- High-profile 5-1/2" baseboards and 2-1/4" casing
- Main living floor with 10' ceilings

## CULINARY RETREAT

- Premium kitchen appliances:
  - GE® stainless steel 30" four-burner gas freestanding range/oven
  - GE® stainless steel microwave/hood combination
  - GE® stainless steel dishwasher
- Full overlay, European frameless flat-panel cabinetry in white thermofoil with chrome T-bar handles
- Quartz countertops in two color choices or granite countertops in three color choices with full-height backsplash at cooktop (6" backsplash everywhere else)
- Contemporary recessed LED lighting
- Deep stainless steel, single-bowl, undermount sink with Moen® pull-down chrome faucet

## LUXURIOUS MASTER SUITE(S)

- Full overlay, European frameless flat-panel cabinetry in white thermofoil with chrome T-bar handles
- 3" x 6" Daltile® subway ceramic tile shower surrounds
- Beautiful matte-finish cultured marble countertops with 4" backsplash and integral rectangular sinks
- Enhancing 42" mirror with beveled edges
- Moen® faucets and showerhead in attractive polished chrome finish

## WELCOMING BATHROOMS

- Full overlay, European frameless flat-panel cabinetry in white thermofoil with chrome T-bar handles
- Fiberglass tub/shower surrounds in all secondary baths
- Beautiful matte-finish cultured marble countertops with 4" backsplash and integral rectangular sink in secondary baths
- Enhancing 42" mirror with beveled edges in secondary baths and powder, per residence
- Moen® faucet and showerhead in attractive polished chrome finish in secondary baths

## EXTRA INCLUDED FEATURES

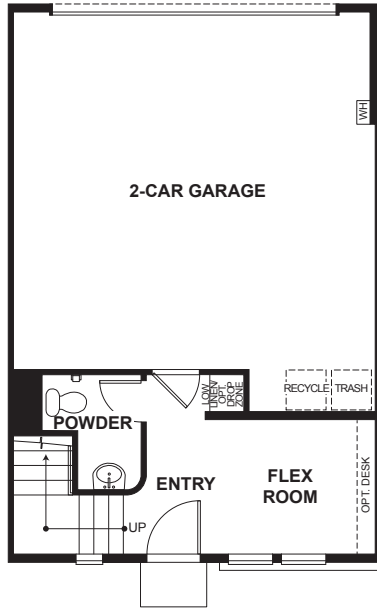
- Ample pre-wiring throughout:
  - Ceiling fan pre-wiring in great room and master bedroom
  - Universal multimedia pre-wiring in great room
  - Additional phone pre-wiring in kitchen and master bedroom
  - Cable pre-wiring in secondary bedrooms
- Electric vehicle conduit in garage
- Solar panel conduit in attic
- Honeywell® Wi-Fi programmable thermostat
- Low-E glass vinyl-framed windows throughout
- Contemporary Therma-Tru® fiberglass entry door with quality Kwikset® door hardware
- Wayne Dalton® steel garage door and Genie® garage door opener with two remotes
- Rinnai® tankless water heater
- 14 SEER high-efficiency AC condenser

# RESIDENCE 1R

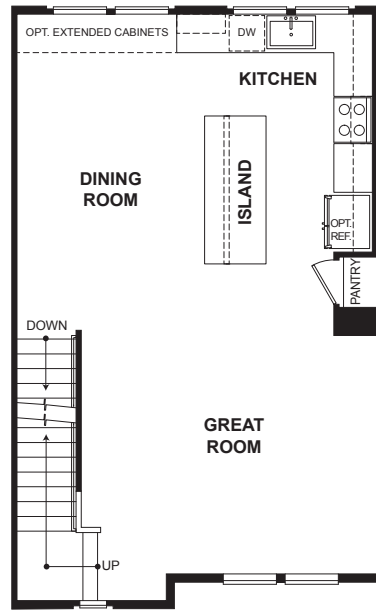
Modeled

1,554 SQ. FT.  
 2 BEDROOMS  
 2.5 BATHROOMS  
 2-CAR GARAGE

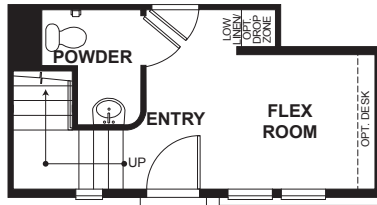
FIRST FLOOR



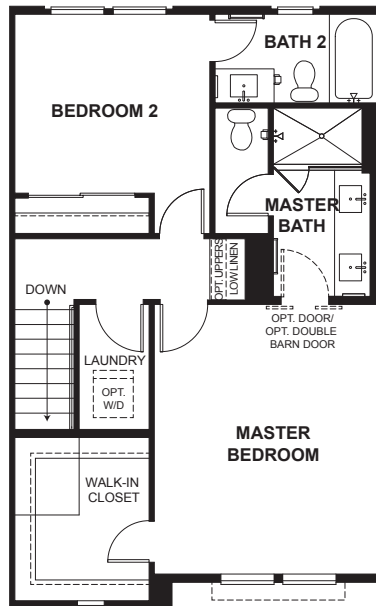
SECOND FLOOR



ACCESSIBLE UNIT



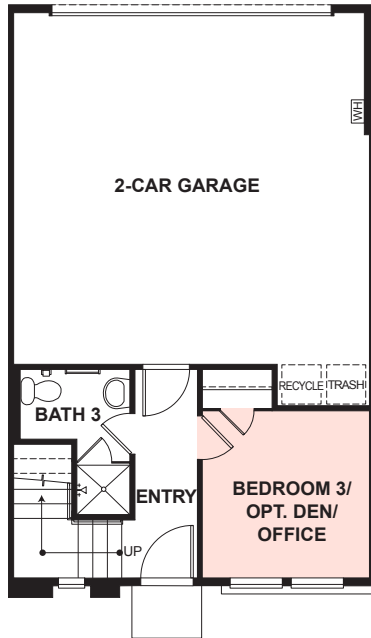
THIRD FLOOR



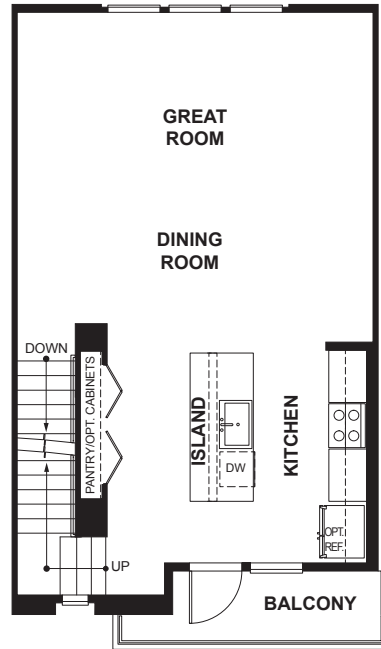
# RESIDENCE 2R

1,598 SQ. FT.  
 3 BEDROOMS  
 3 BATHROOMS  
 OPT. DEN/OFFICE  
 PRIVATE BALCONY  
 2-CAR GARAGE

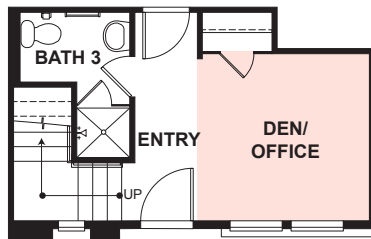
FIRST FLOOR



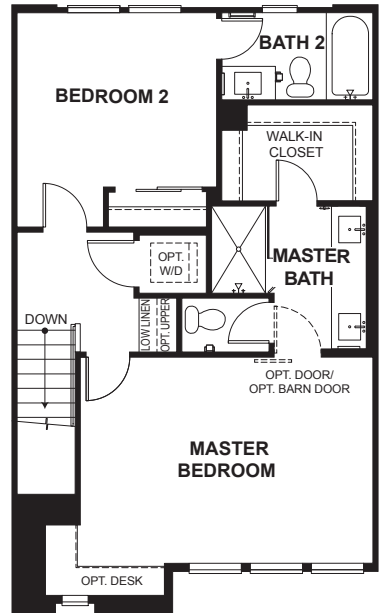
SECOND FLOOR



OPT. DEN/OFFICE



THIRD FLOOR

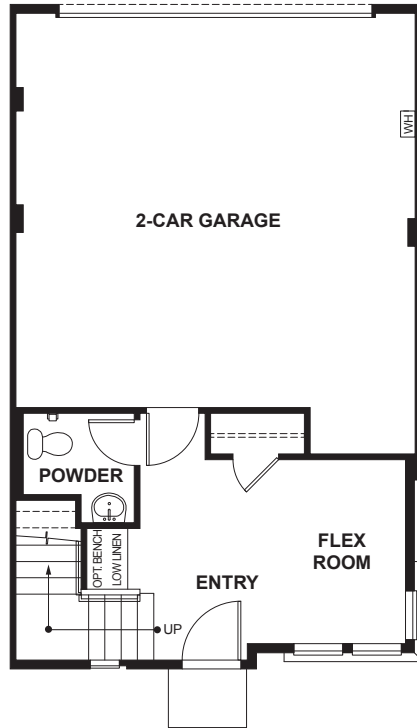


# RESIDENCE 3R

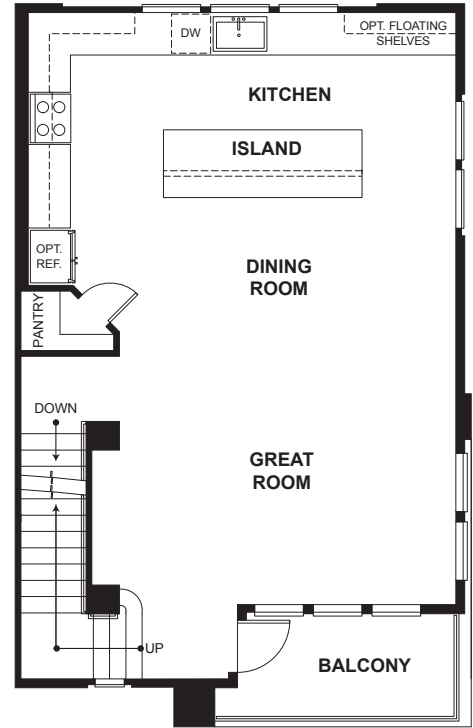
Modeled

1,772 SQ. FT.  
 3 BEDROOMS  
 2.5 BATHROOMS  
 OPT. DOUBLE MASTER BED  
 PRIVATE BALCONY  
 2-CAR GARAGE

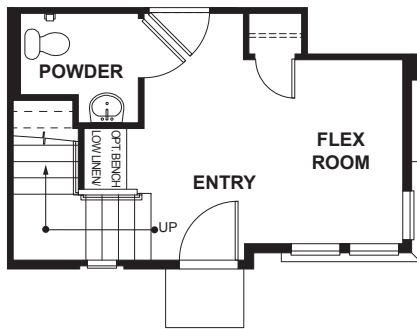
FIRST FLOOR



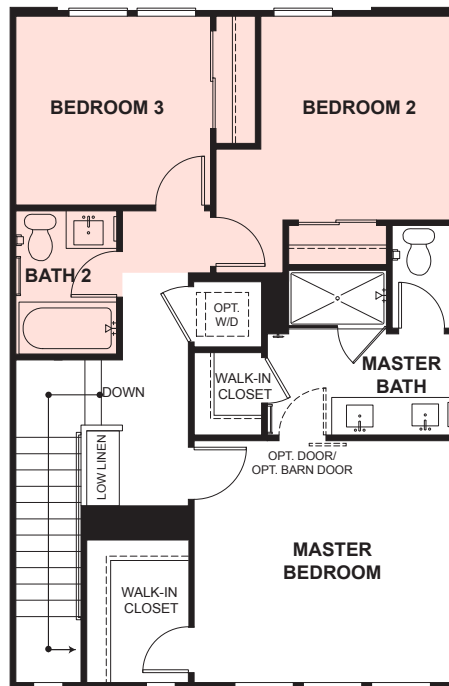
SECOND FLOOR



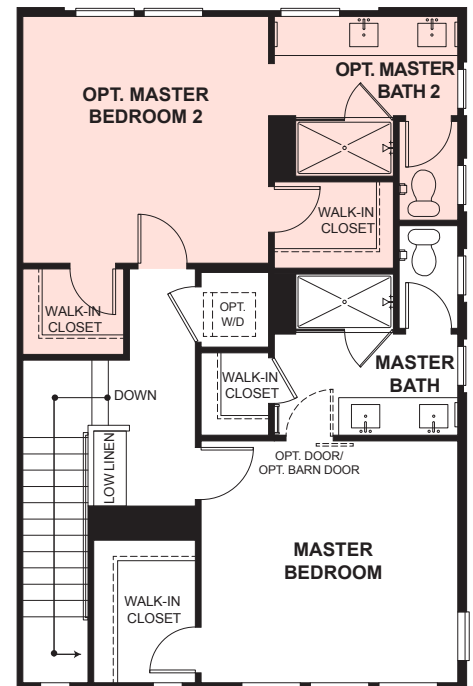
ACCESSIBLE UNIT



THIRD FLOOR



OPT. DOUBLE MASTER BEDROOM



A PLACE TO  
GATHER

A PLACE TO  
DREAM

A PLACE TO  
CALL HOME

Founded in 1988 by Michael Maples and Gregg Nelson, the Trumark Group of Companies is a multidisciplinary real estate developer with expertise in homebuilding, land acquisition, entitlements, master-planned community development, office and retail. Focused on award-winning design and flawless execution, Trumark has entitled over 5,000 residential lots and ranks as one of the top private builders in the nation.

In 2008 Trumark formally launched Trumark Homes, a visionary, next-generation homebuilder specializing in new residential development throughout California. With an emphasis on building homes with memorable architecture in thriving locations, the company has been nationally recognized for excellence in design, receiving esteemed awards across multiple new home communities. Innovative, distinctive and true to its vision, Trumark Homes adds value with each new home community it creates, offering residents a place to gather, a place to dream and a place to call home.



LIVE WELL

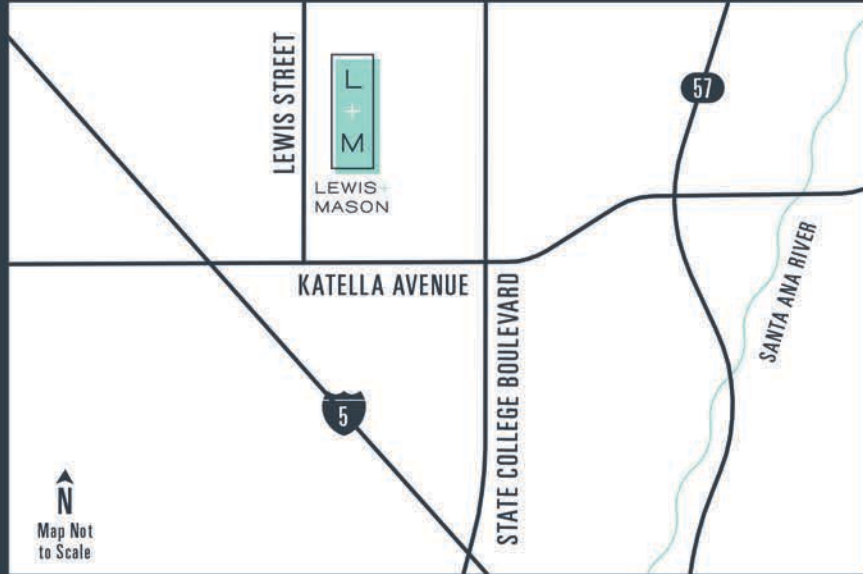
 charity: water



Trumark Homes is dedicated to creating communities that foster an enthusiasm to connect, the strength to aspire and the compassion to give back. And that's why we choose to partner with charity: water, a non-profit organization bringing clean and safe drinking water to people in developing nations.

Clean water is the most essential resource on the planet, yet for 663 million individuals across the globe it is the rarest. After witnessing first-hand the immense need for potable water in African villages, Trumark co-founders Michael Maples and Gregg Nelson were determined to help end the water crisis in the most disadvantaged areas of the world.

Through our partnership with charity: water, Trumark has committed, for approximately every 50 homes we build, to donate a new well that brings clean, safe drinking water where it's needed most, easing the daily struggle and supporting growing economies. To date, Trumark's contributions have improved the lives of over 4,500 underserved people.



## LewisAndMason.com

1700 S. Lewis Street  
Anaheim, CA 92805

TRUMARK HOMES



All window coverings and flooring displayed in the model homes have been upgraded. Exterior landscaping surrounding the models and sales office is highly upgraded and not available for purchase at the design center; side yard configurations in non-model homes will be built per plan specifications. In the interest of continuous improvement, Trumark reserves the right to make modifications to all standard or included features, plans, exterior designs, prices, materials and specifications at any time without notice. Map, photographs, renderings and landscaping are illustrative and conceptual. Models do not reflect racial preference. Homes pictured do not represent actual homesites. Square footages are approximate. Windows and floor plans vary per building, elevation and type. Copyright © 2018 Trumark Construction Services, Inc. All rights reserved. CA DRE broker license no. 01877720. 🏠